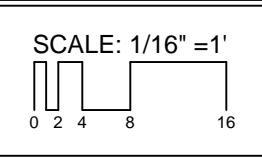


BUILDING SQUARE FOOTAGE	
SUB-BASEMENT	597
BASEMENT	7,570
FIRST FLOOR	19,997
MEZZANINE	1,011
SECOND FLOOR	6,072
TOTAL	35,247

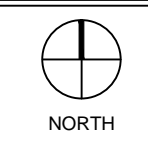
SUB-BASEMENT FLOOR PLAN

GROSS SQUARE FEET
597
 BLDG. TOTAL: 35,247 S.F.

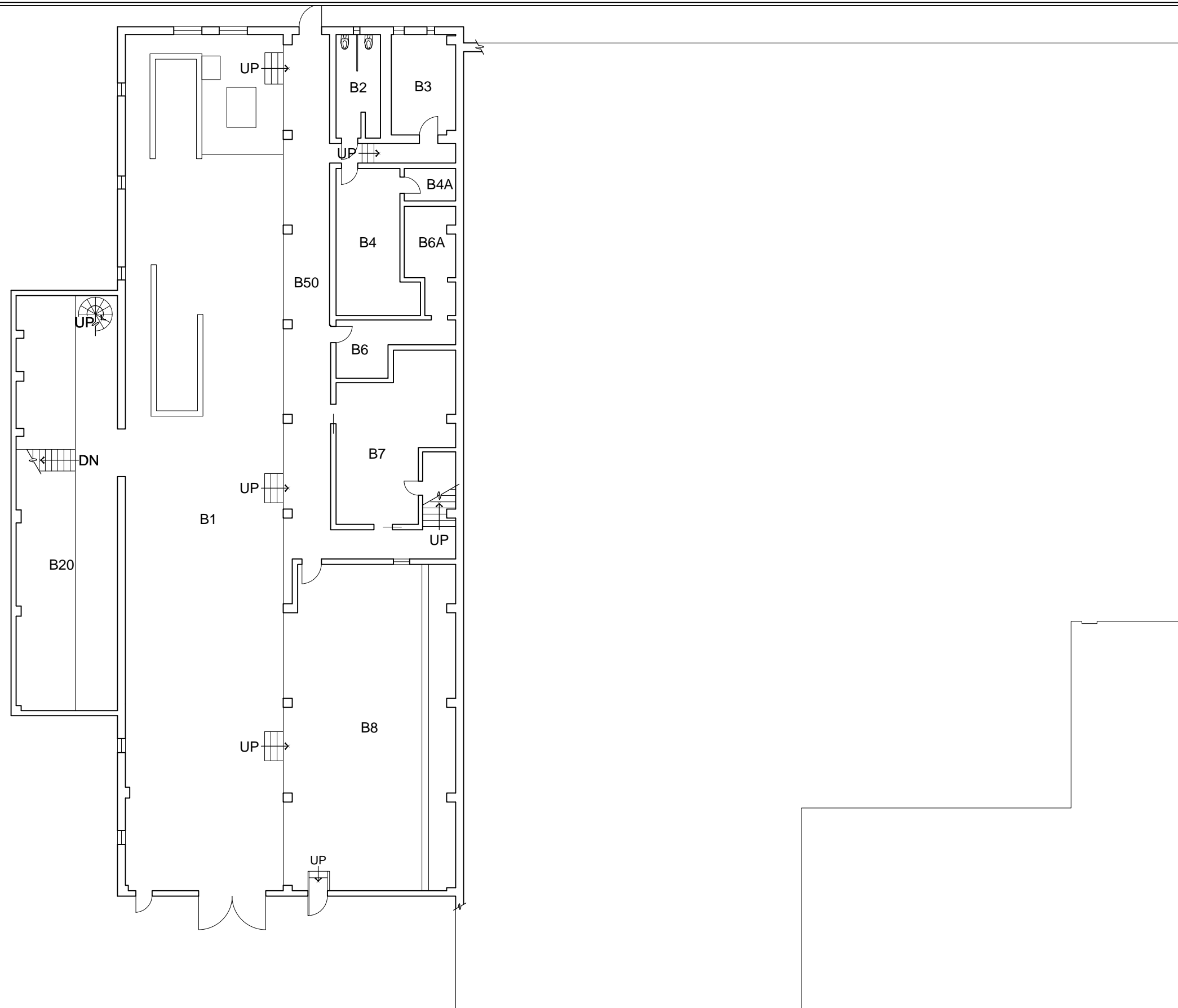
REVISION DATES	
07-21-1966	07-11-1991
07-21-1966	06-09-2010
06-10-1982	04-11-2013
WSU FILE NO.	0071_R01



ALBROOK HYDRAULICS LABORATORY



BLDG. NO.
71
 SHEET NO.
R-1



BASEMENT FLOOR PLAN

GROSS SQUARE FEET

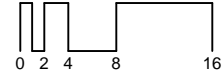
7,570

BLDG. TOTAL: 35,247 S.F.

REVISION DATES

07-21-1966	07-11-1991
07-21-1966	06-09-2010
06-10-1982	04-11-2013
WSU FILE NO.	0071_R02

SCALE: 1/16" = 1'



ALBROOK HYDRAULICS LABORATORY



NORTH

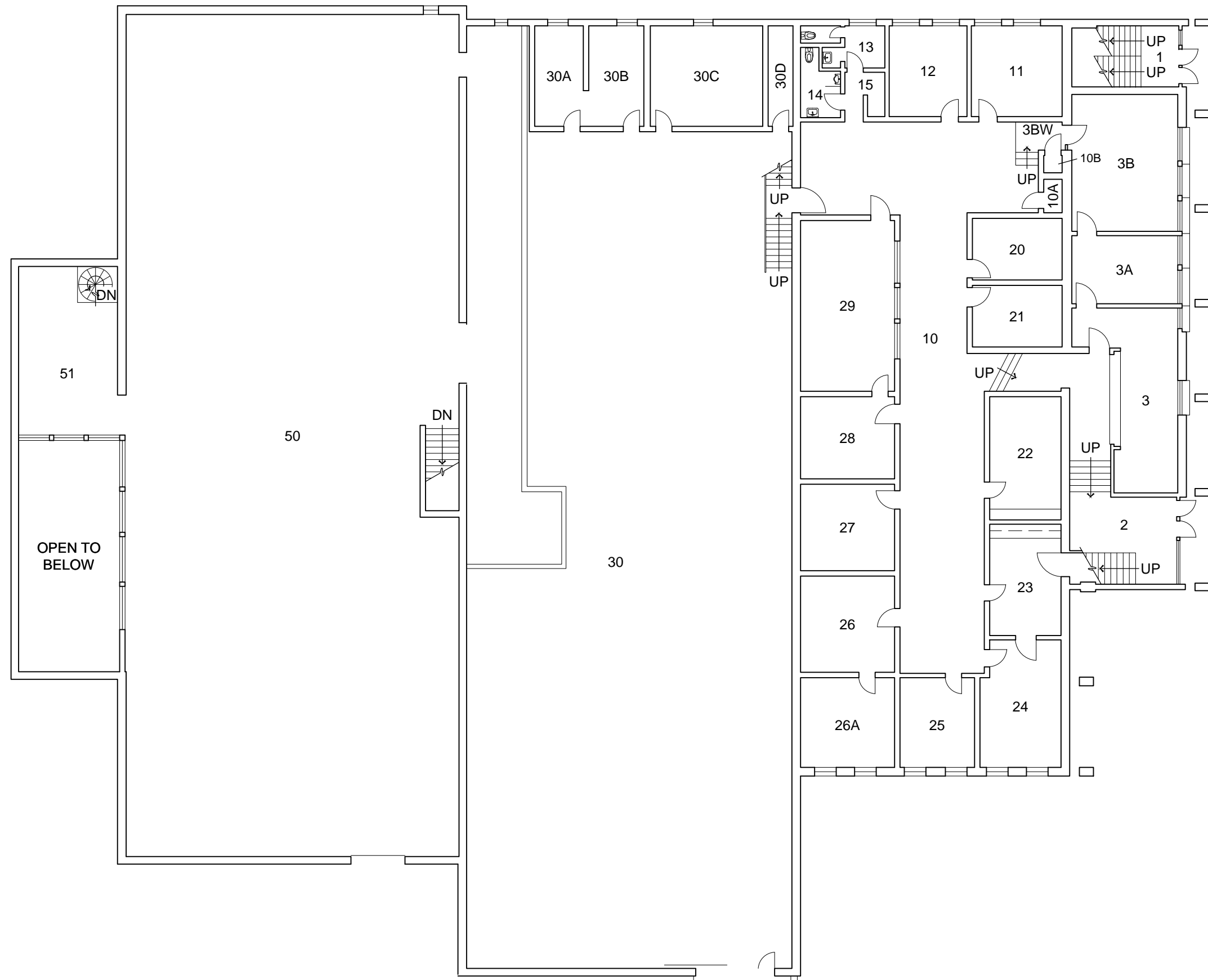


BLDG. NO.

71

SHEET NO.

R-2



FIRST FLOOR PLAN

GROSS SQUARE FEET

19,997

BLDG. TOTAL: 35,247 S.F.

REVISION DATES

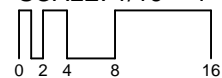
09-03-1968 09-19-1989

04-09-1976 06-09-2010

06-10-1982 04-11-2013

WSU FILE NO. 0071_R03

SCALE: 1/16" = 1'



ALBROOK HYDRAULICS LABORATORY



NORTH

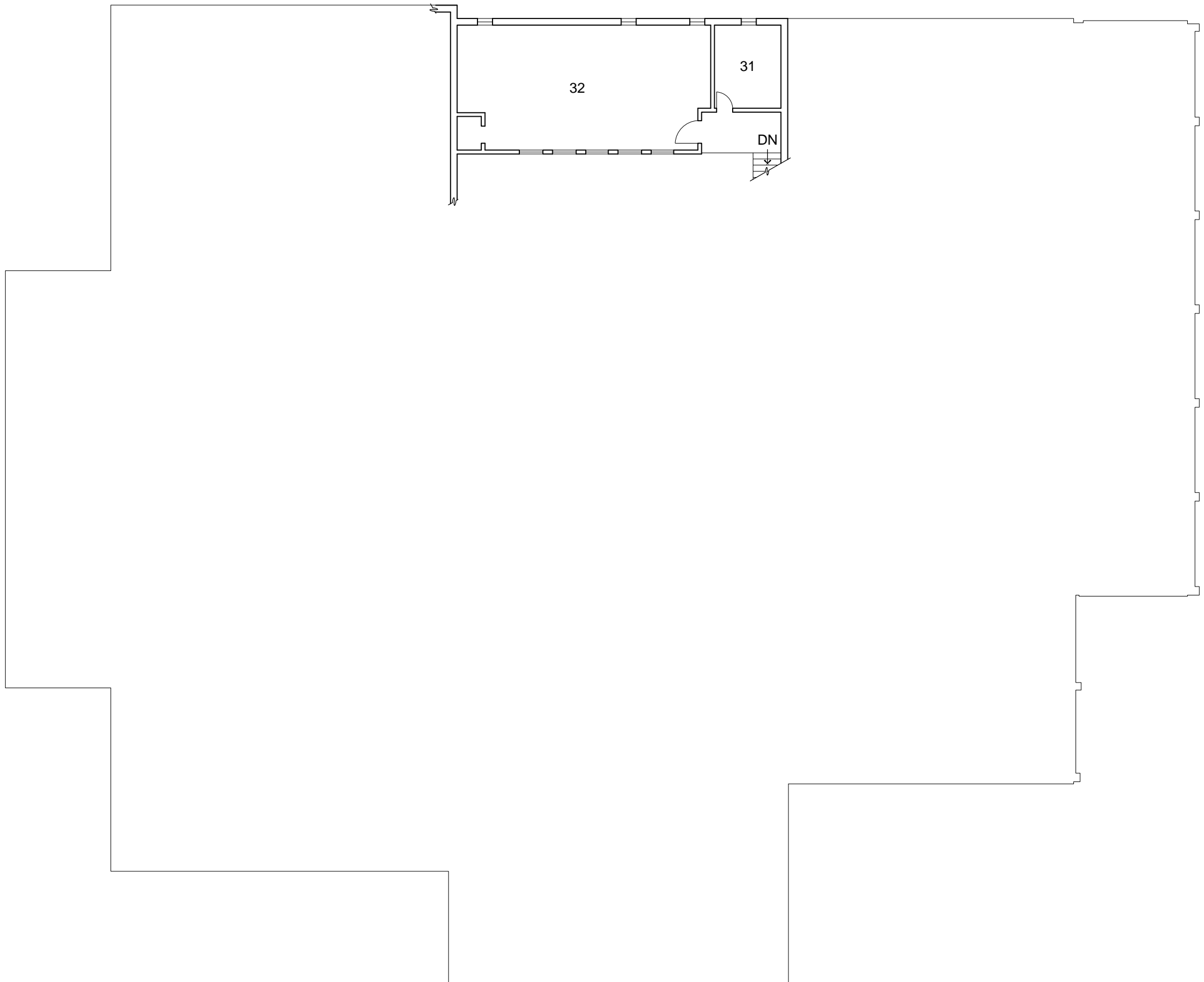


BLDG. NO.

71

SHEET NO.

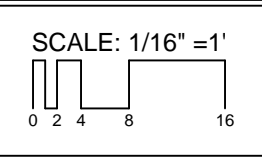
R-3



MEZZANINE FLOOR PLAN

GROSS SQUARE FEET
1,011
BLDG. TOTAL: 35,247 S.F.

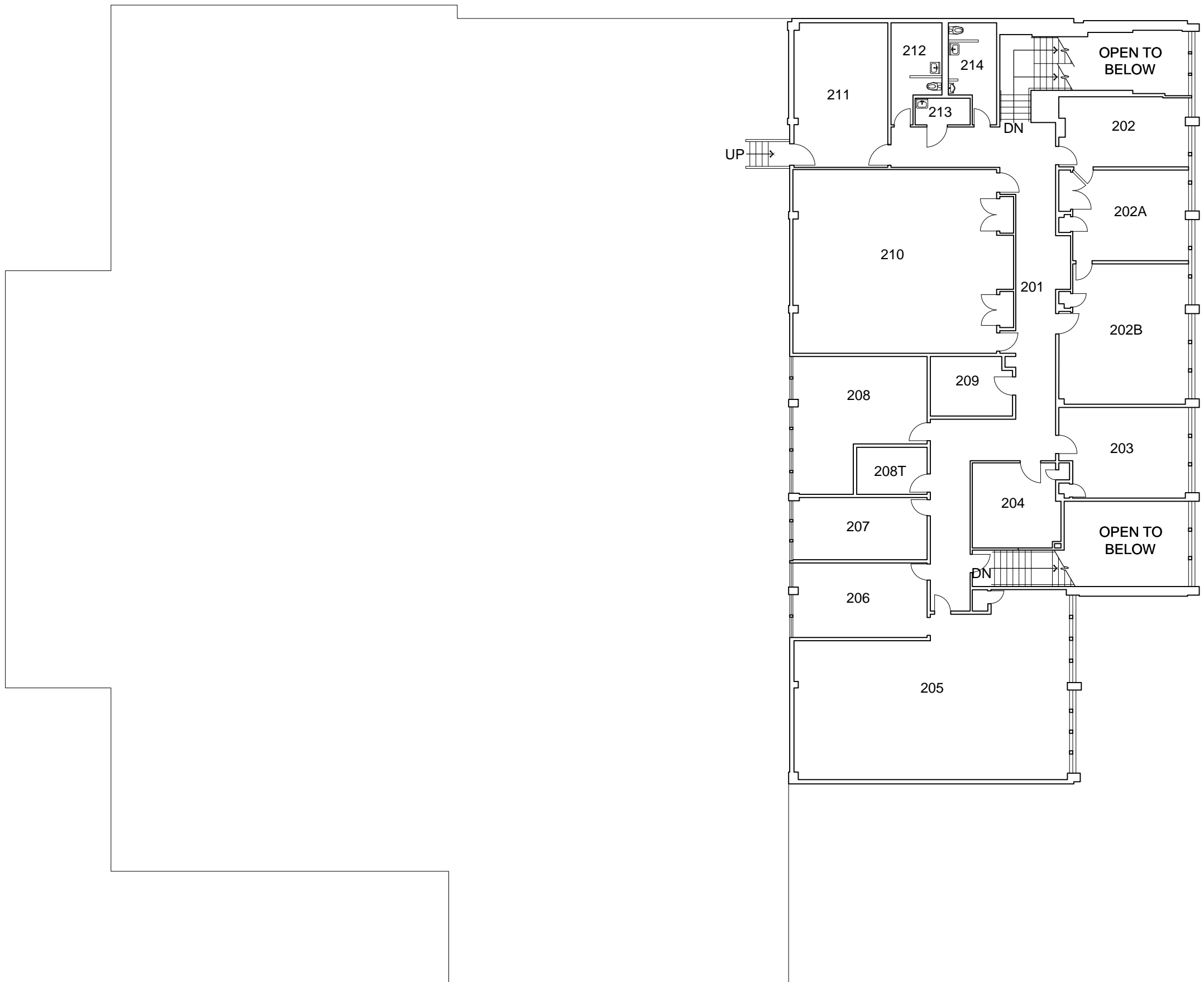
REVISION DATES	
04-11-2013	
WSU FILE NO.	0071_R04



ALBROOK HYDRAULICS LABORATORY



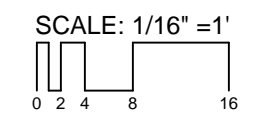
BLDG. NO.
71
SHEET NO.
R-4



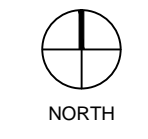
SECOND FLOOR PLAN

GROSS SQUARE FEET
6,072
 BLDG. TOTAL: 35,247 S.F.

REVISION DATES	
11-15-1966	04-23-1999
05-04-1967	06-09-2010
03-09-1984	04-11-2013
WSU FILE NO.	0071_R05



ALBROOK HYDRAULICS LABORATORY



BLDG. NO.
71
 SHEET NO.
R-5