

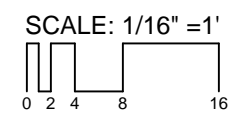
BUILDING SQUARE FOOTAGE	
BASEMENT	3,935
FIRST FLOOR	13,794
SECOND FLOOR	12,442
THIRD FLOOR	12,442
FOURTH FLOOR	12,442
FIFTH FLOOR	10,488
ROOF	506
TOTAL	66,049

BASEMENT FLOOR PLAN

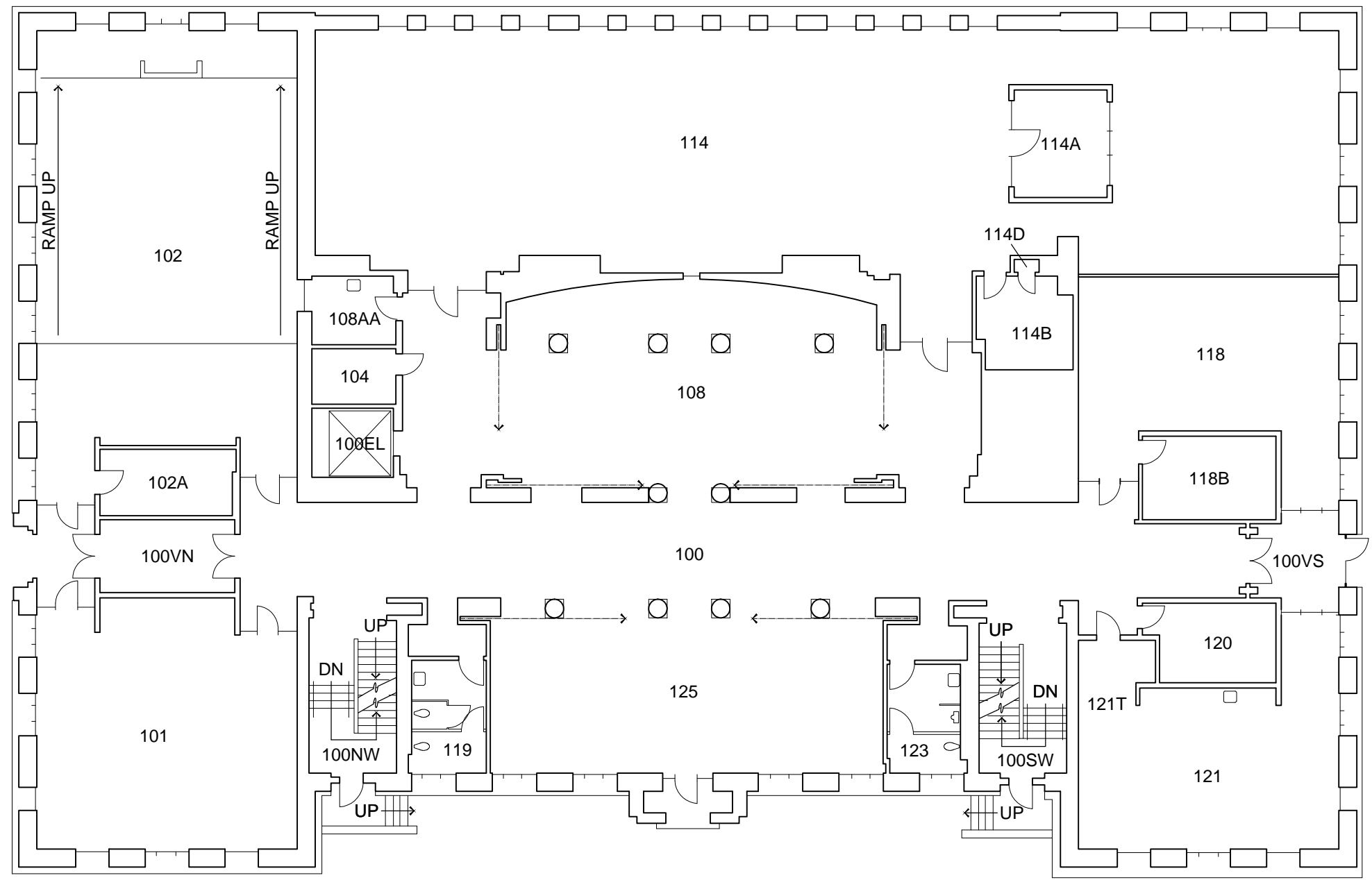
CARPENTER HALL

GROSS SQUARE FEET
3,935
 BLDG. TOTAL: 66,049 S.F.

REVISION DATES	
03-01-1991	
06-27-1996	
WSU FILE NO.	0020_R01



BLDG. NO.
20
 SHEET NO.
R-1

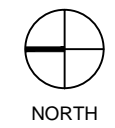
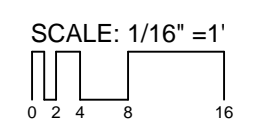


FIRST FLOOR PLAN

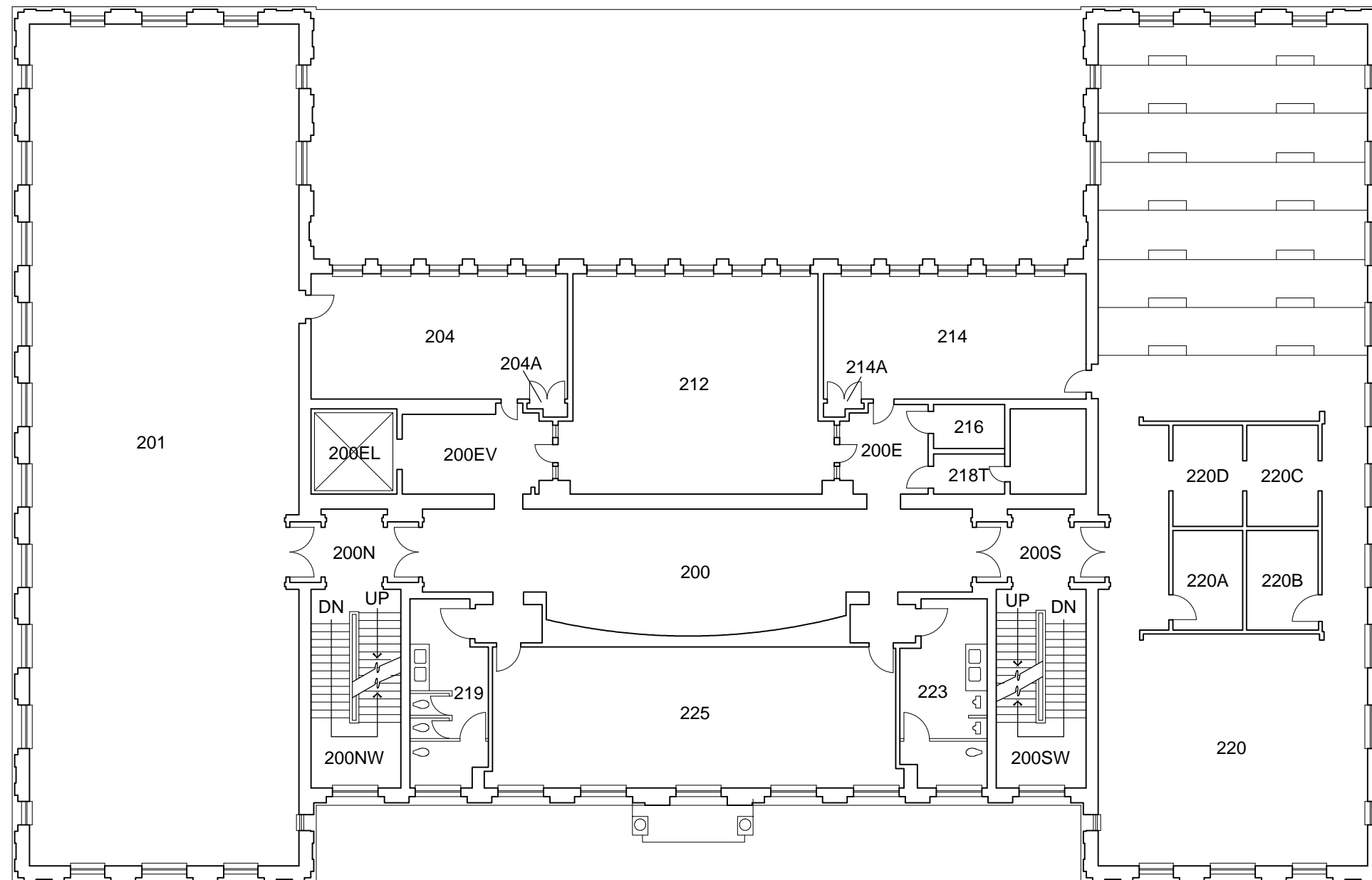
CARPENTER HALL

GROSS SQUARE FEET
13,794
 BLDG. TOTAL: 66,049 S.F.

REVISION DATES	
03-01-1991	03-28-2013
07-23-1991	
11-06-1995	
WSU FILE NO. 0020_R02	



BLDG. NO.
20
 SHEET NO.
R-2



SECOND FLOOR PLAN

CARPENTER HALL

GROSS SQUARE FEET

12,442

BLDG. TOTAL: 66,049 S.F.

REVISION DATES

03-01-1991	
07-18-1991	
06-27-1996	

WSU FILE NO. 0020_R03

SCALE: 1/16" = 1'



NORTH

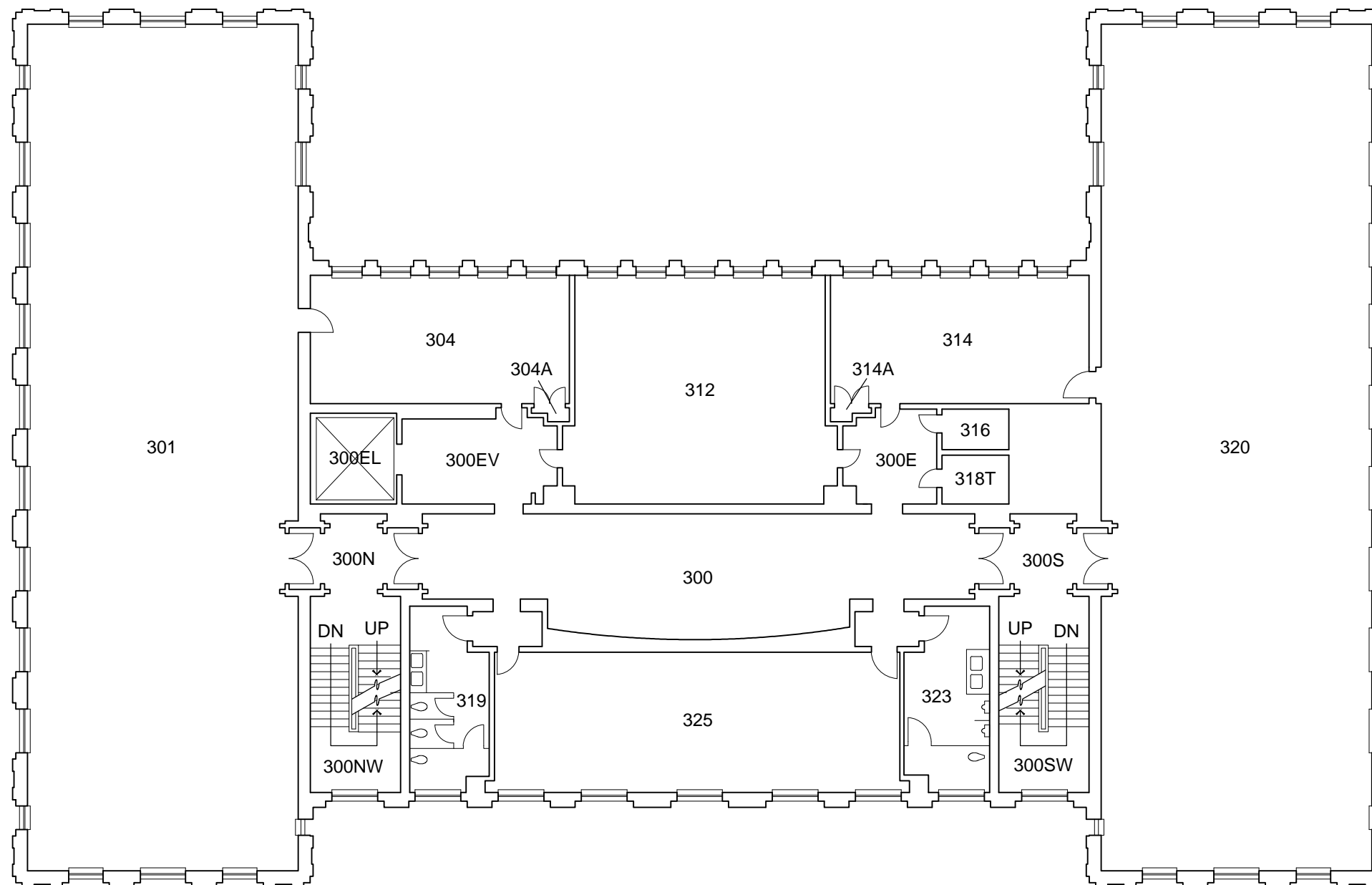


BLDG. NO.

20

SHEET NO.

R-3



THIRD FLOOR PLAN

CARPENTER HALL

GROSS SQUARE FEET

12,442

BLDG. TOTAL: 66,049 S.F.

REVISION DATES

03-01-1991	
07-07-1993	
06-27-1996	

WSU FILE NO. 0020_R04

SCALE: 1/16" = 1'



NORTH

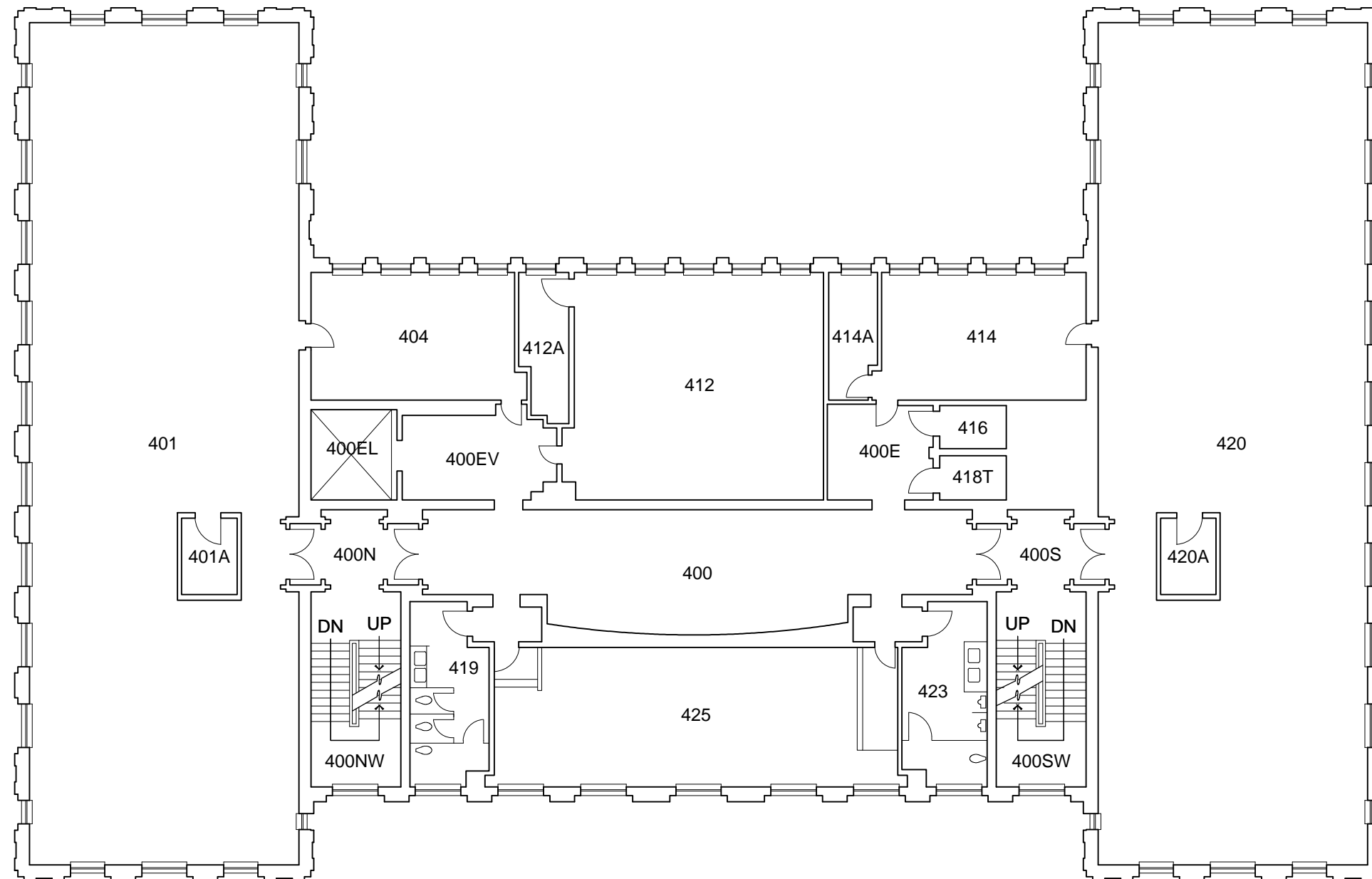


BLDG. NO.

20

SHEET NO.

R-4

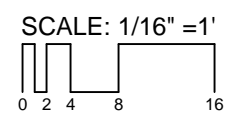


FOURTH FLOOR PLAN

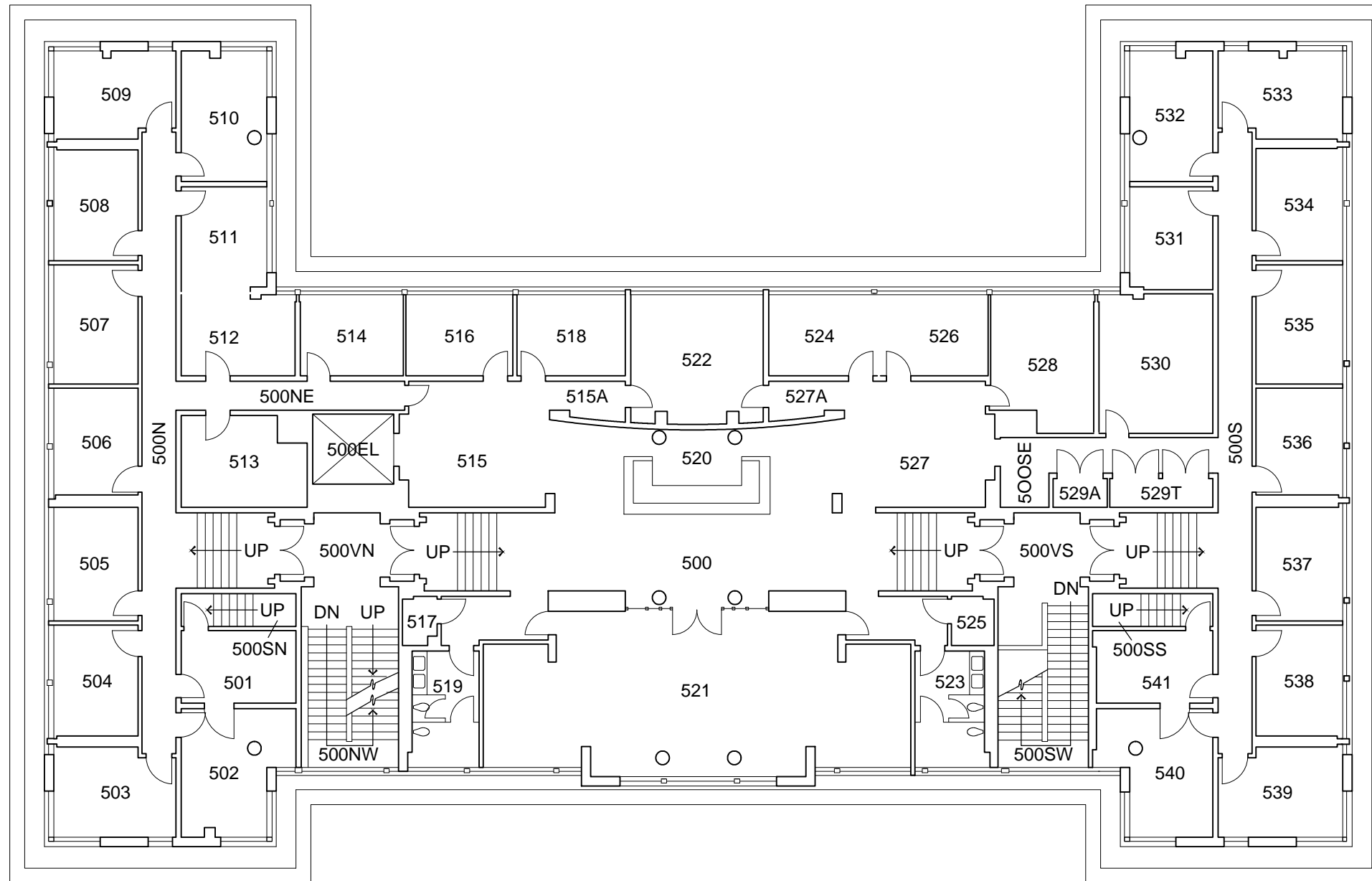
CARPENTER HALL

GROSS SQUARE FEET
12,442
 BLDG. TOTAL: 66,049 S.F.

REVISION DATES	
03-01-1991	
07-07-1993	
06-27-1996	
WSU FILE NO.	0020_R05



BLDG. NO.
20
 SHEET NO.
R-5



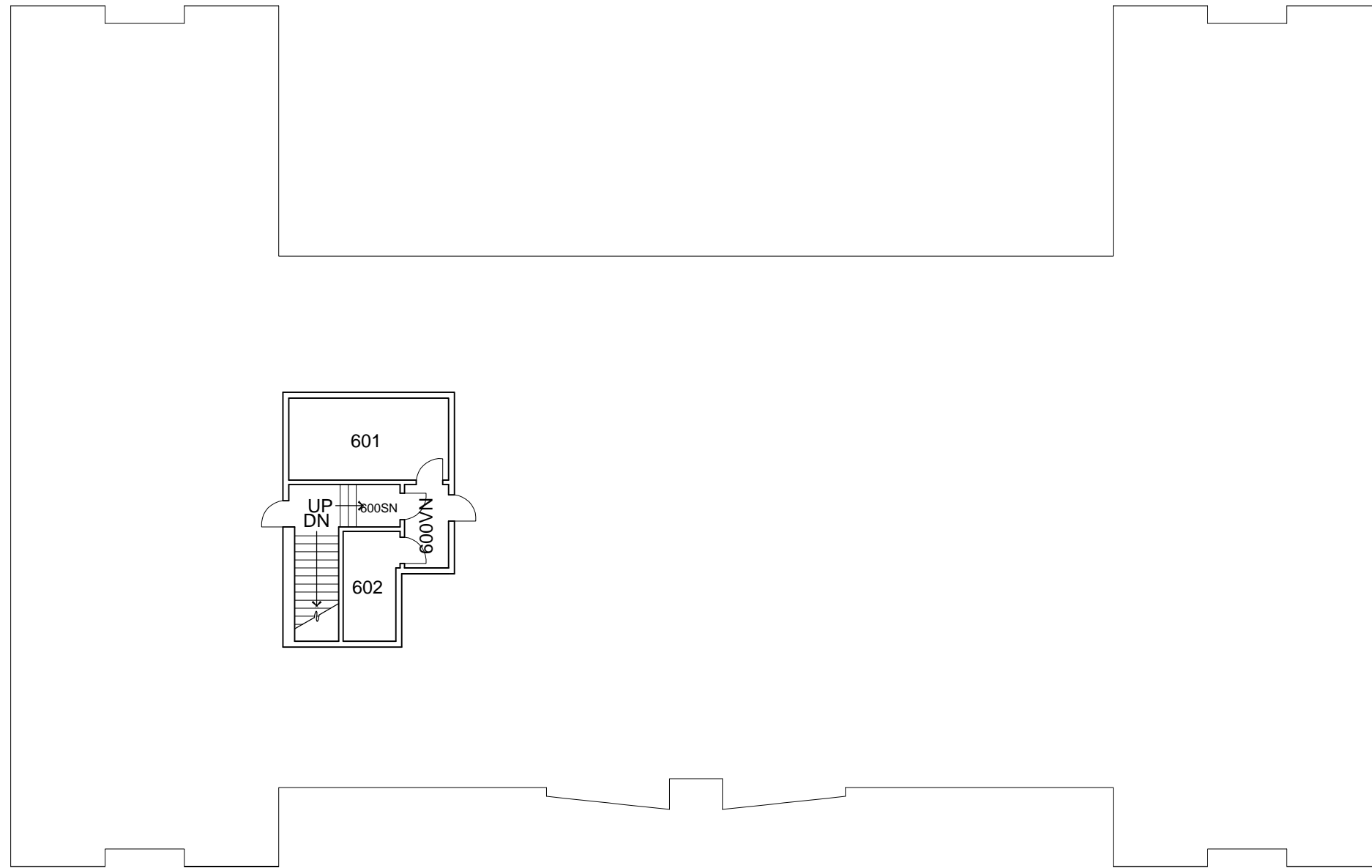
FIFTH FLOOR PLAN

SCALE: 1/16" = 1'
16

CARPENTER HALL



BLDG. NO.
20
SHEET NO.
R-6



ROOF PLAN

CARPENTER HALL

GROSS SQUARE FEET

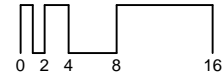
506

BLDG. TOTAL: 66,049 S.F.

REVISION DATES

03-01-1991	
07-08-1993	
08-06-1997	
WSU FILE NO.	0020_R07

SCALE: 1/16" = 1'



NORTH



BLDG. NO.

20

SHEET NO.

R-7