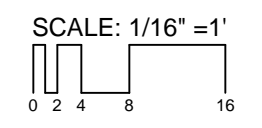


BASEMENT FLOOR PLAN

BUILDING SQUARE FOOTAGE	
BASEMENT	10,270
FIRST FLOOR	9,244
SECOND FLOOR	8,055
THIRD FLOOR	7,782
TOTAL	35,351

GROSS SQUARE FEET
10,270
 BLDG. TOTAL: 35,351 S.F.

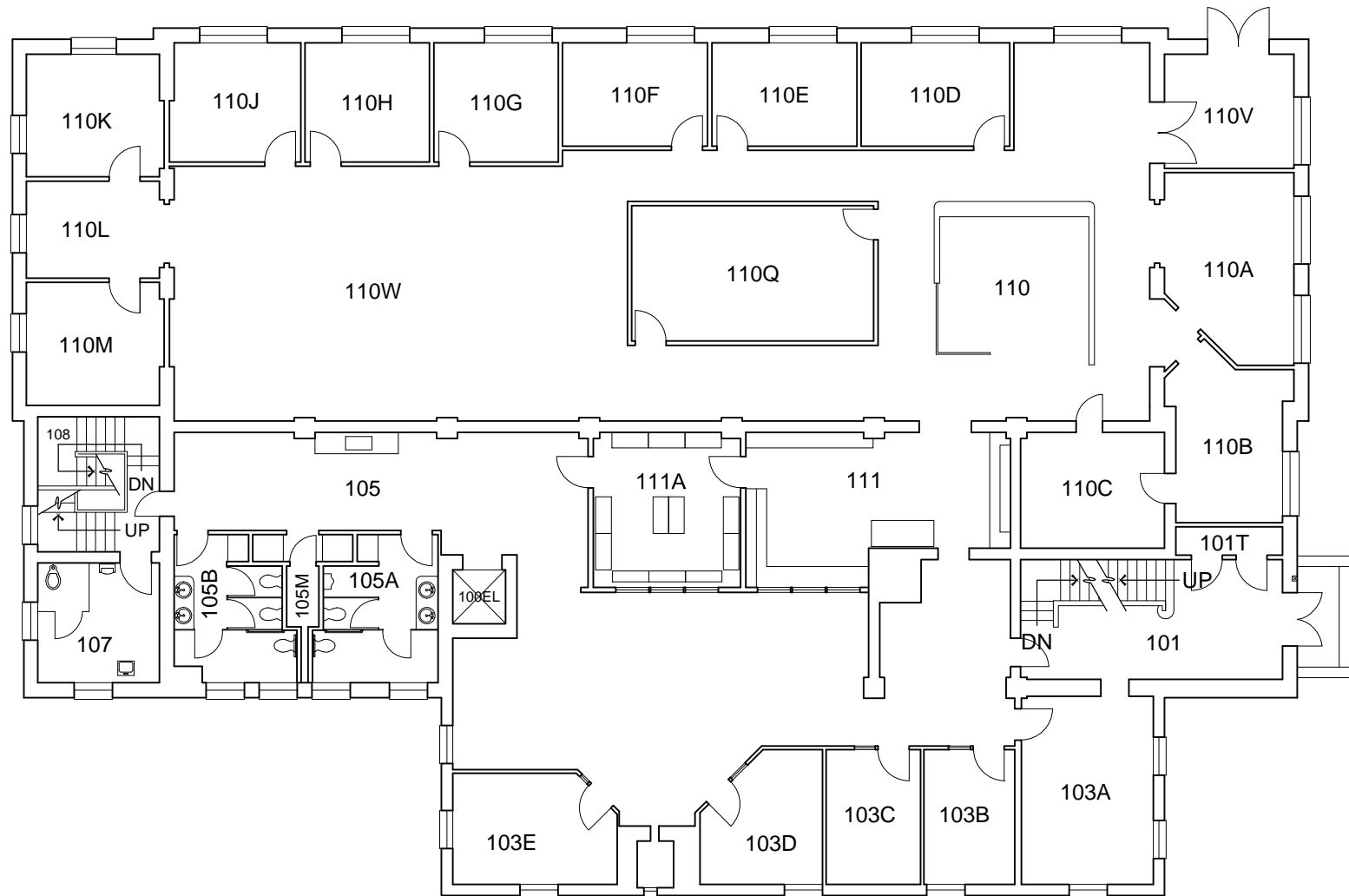
REVISION DATES	
01-21-1986	11-20-1997
07-02-1996	09-30-2002
07-15-1996	11-14-2014
WSU FILE NO.	0005_R01



COMMONS



BLDG. NO.
5
 SHEET NO.
R-1

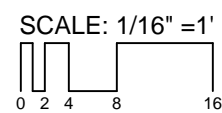


FIRST FLOOR PLAN

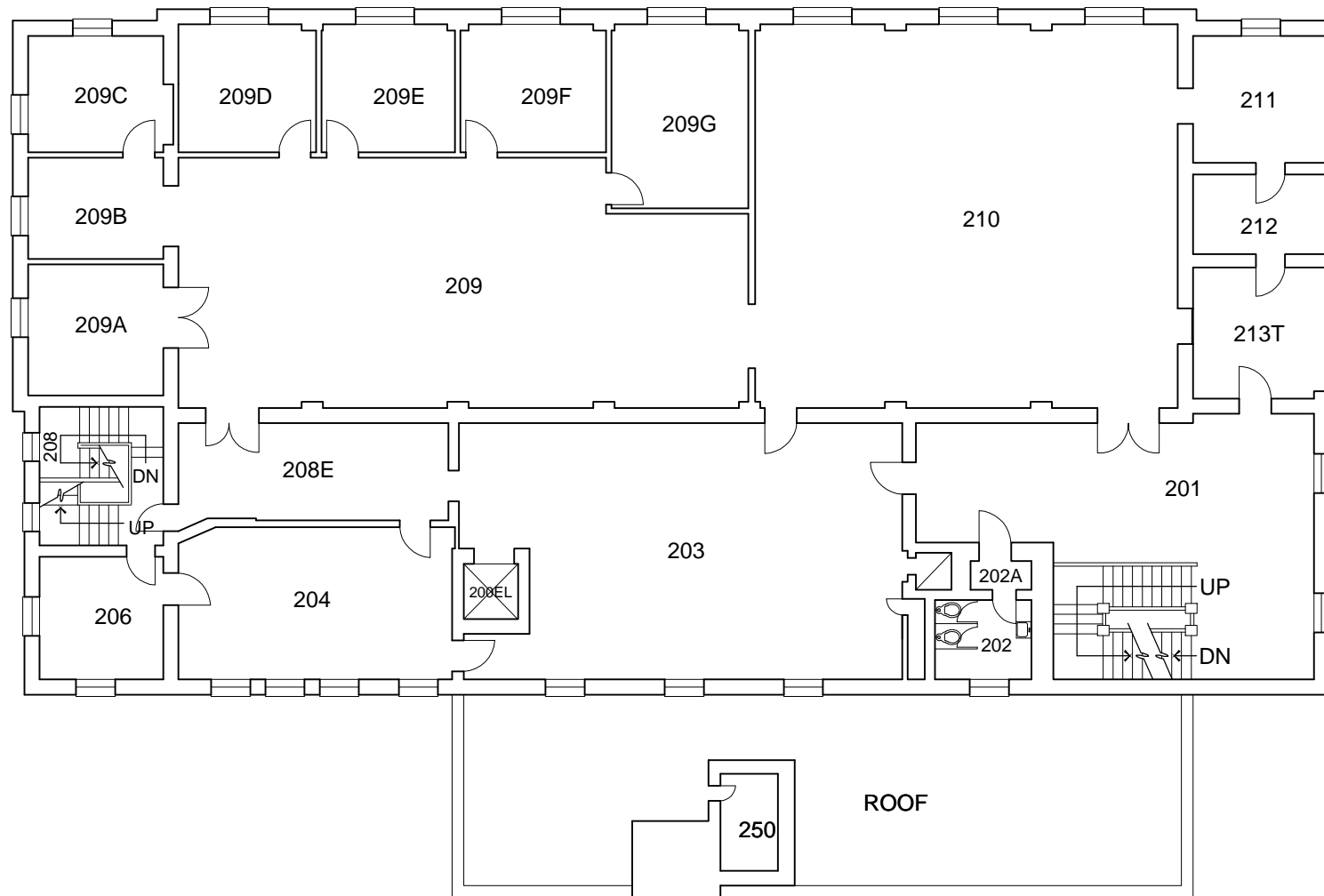
COMMONS

GROSS SQUARE FEET
9,244
 BLDG. TOTAL: 35,351 S.F.

REVISION DATES	
05-20-1997	
07-15-1997	
05-27-2003	
WSU FILE NO.	0005_R02



BLDG. NO.
5
 SHEET NO.
R-2

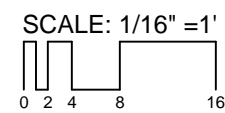


SECOND FLOOR PLAN

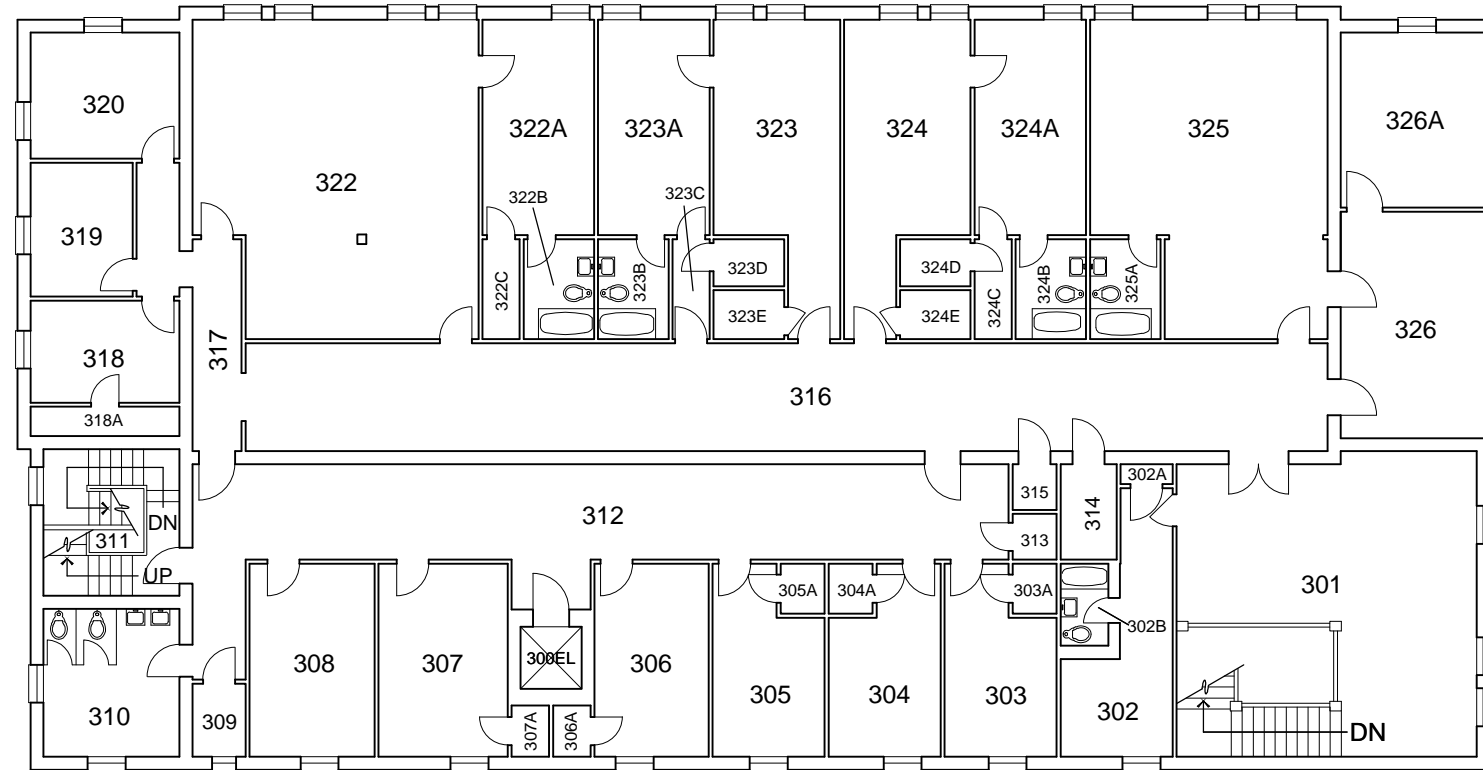
COMMONS

GROSS SQUARE FEET
8,055
 BLDG. TOTAL: 35,351 S.F.

REVISION DATES	
07-02-1996	09-26-2002
11-24-1997	09-26-2002
06-05-2000	01-12-2010
WSU FILE NO.	0005_R03



BLDG. NO.
5
 SHEET NO.
R-3

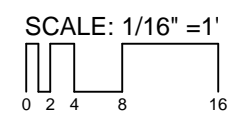


THIRD FLOOR PLAN

COMMONS

GROSS SQUARE FEET
7,782
BLDG. TOTAL: 35,351 S.F.

REVISION DATES	
03-12-1981	10-09-1997
03-12-1981	09-26-2002
07-16-1997	06-28-2010
WSU FILE NO.	0005_R04



BLDG. NO.
5
SHEET NO.
R-4